

**Resident
Educator
Development**



The RED Program

Dr. V. Mahidhar Reddy

WHY RED ?

**Medical
students**

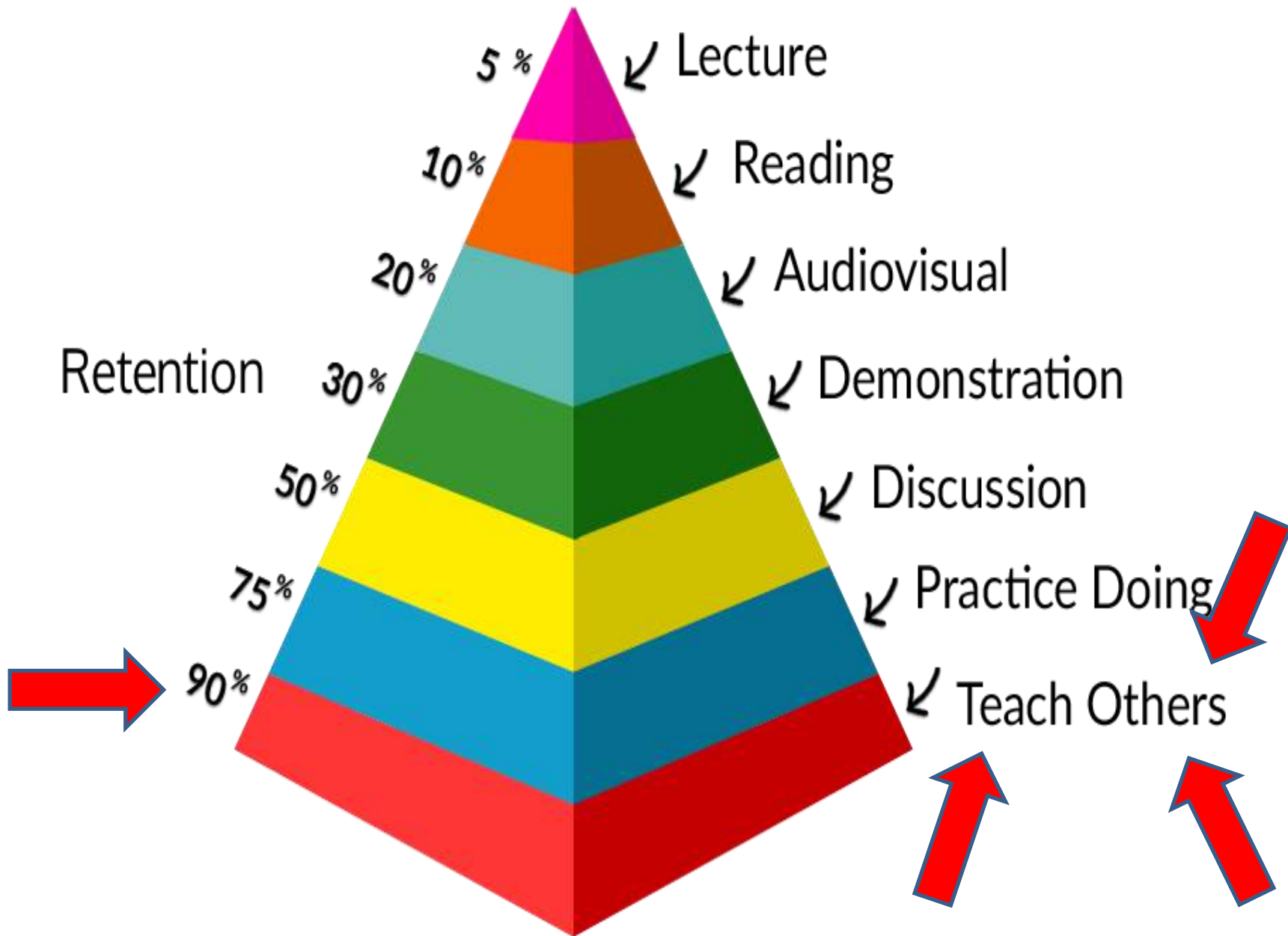
Residents

consultants

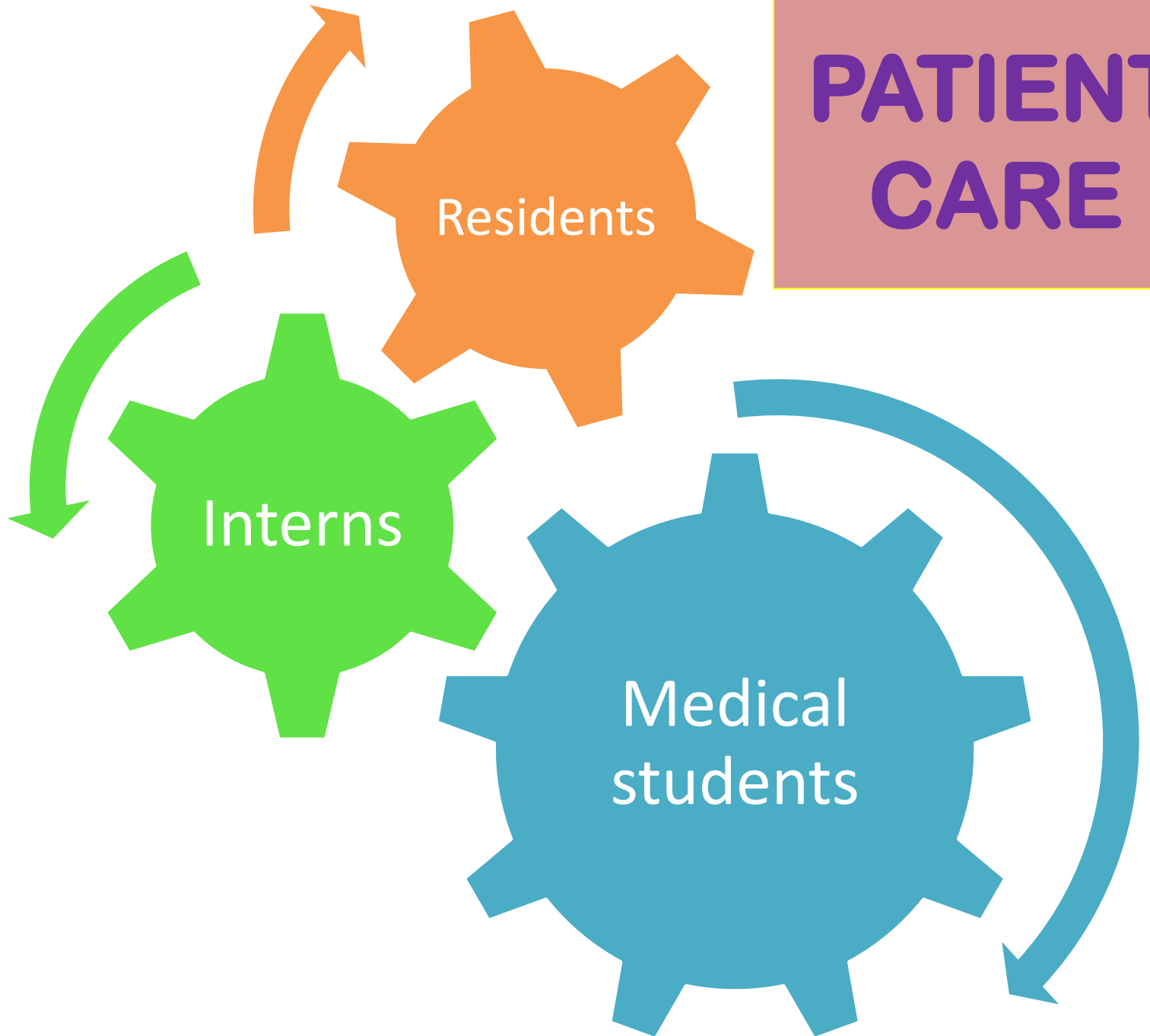


The best way to learn is to teach

— *Frank Oppenheimer* —



**PATIENT
CARE**



Residents

Interns

Medical
students

Are you ready to teach?

The Medical Student Learner

- Data gatherers
- Memorize a lot
- Focus on which decision is 'right' or 'wrong'
- Focus on symptoms rather than identifying a disease process
- Utilize pattern recognition
- May use analytical thinking

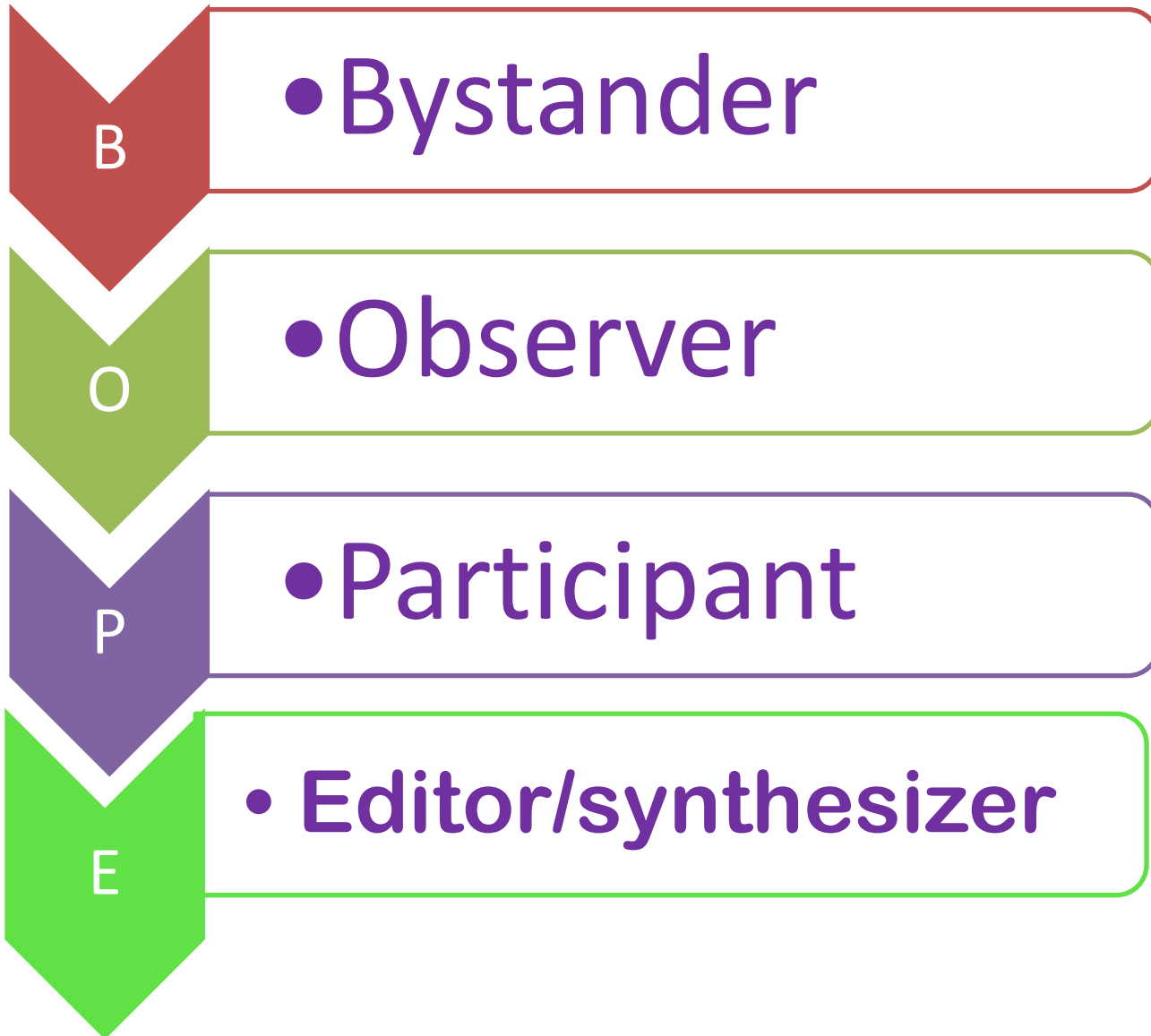
The Resident Learner

- Utilize pattern recognition and analytical thinking
- Utilize a weighted decision making process
- Focus on which decision is better or worse versus 'right' or 'wrong'

The Adult Learner

- Learn relevant information
- Learn concepts and principles
- Learn at their own pace
- Motivated when helping set learning objectives
- Want to know what is expected
- Desire feedback

BOPE



Are you ready to teach?

yes



Tools



PRIMING

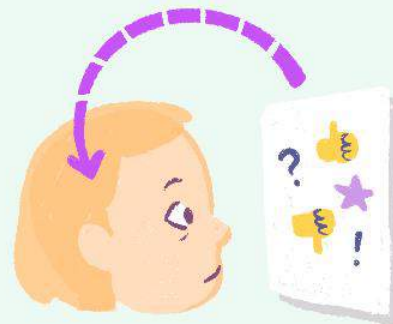
How Does Priming Affect Everyday Life?



YELLOW



Influences how you perceive the world



Subtly influences your behavior



Helps you perform better in an educational setting

FRAMING

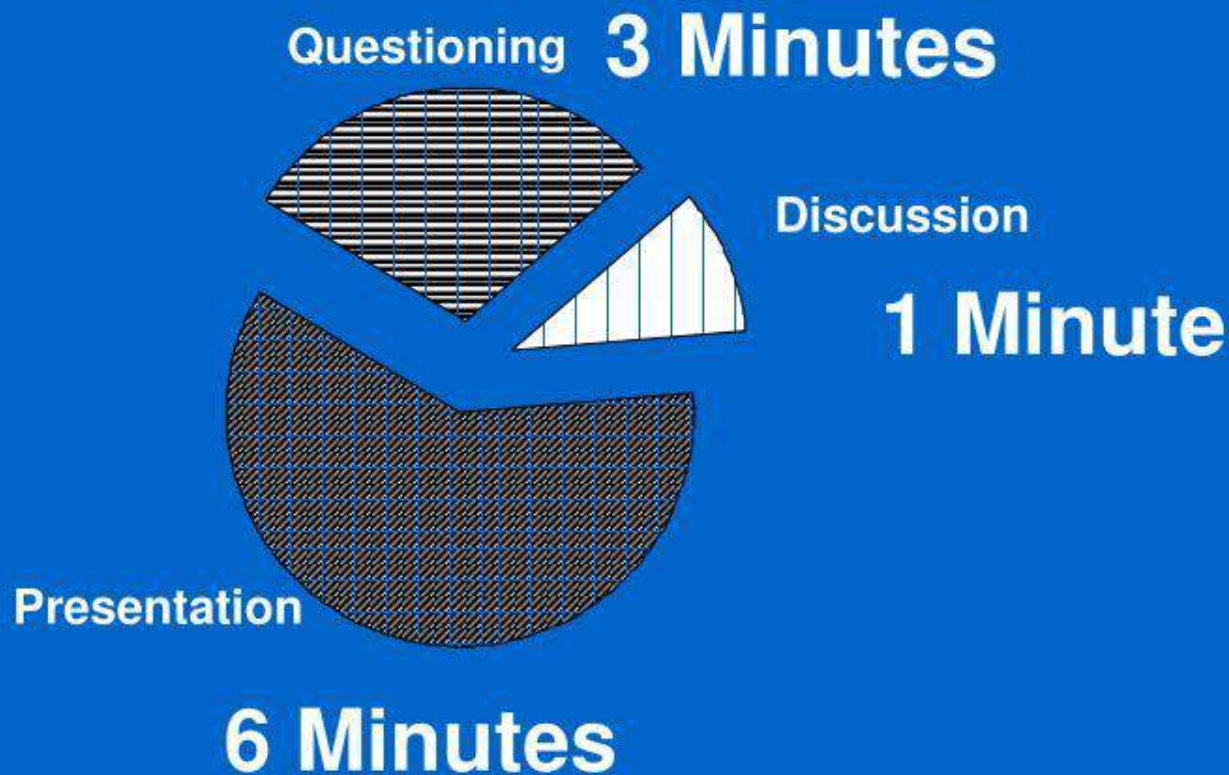


MODELING

- Useful organizational/time management strategy when you are most pressed for time or the case is too complex for the learner.
- Examples: “I am going to think aloud for you, or I want you to notice how I perform the physical exam. Pay attention to how I obtain the history.”

The “One Minute Preceptor”

10 Minutes of “Teaching Time”...



One Minute Preceptor

1. Get the student to take a stand

2. Probe for supporting evidence

3. Teach general rules

4. Provide positive feedback

5. Correct errors

SNAPPS

- **Summarize**
- **Narrow**
- **Analyze**
- **Probe**
- **Plan**
- **Select**

Aunt Minnie Approach

Q:- How do you know that woman is your Aunt Minnie?

A:-Because i have seen her before and she looks like her.

Remember: Avoid the Pitfalls

- Asking questions with preprogrammed answers
- Pushing the learner past his or her ability
- Not giving feedback (covered in another session)
- Taking over the case
- Asking too many questions
- Not allowing sufficient wait time
- Inappropriately giving lectures

Summary and Review

- You teach A LOT!
- Adult learners have certain learning needs.
- Learner orientation is an important initial task prior to teaching.
- Priming & framing are useful tools to focus the visit and subsequent teaching points.
- Modeling is helpful when time is limited or the case is too complicated for the learner.
- Teach general rules which can be applied to similar patient cases in the future.

Happy

teaching!